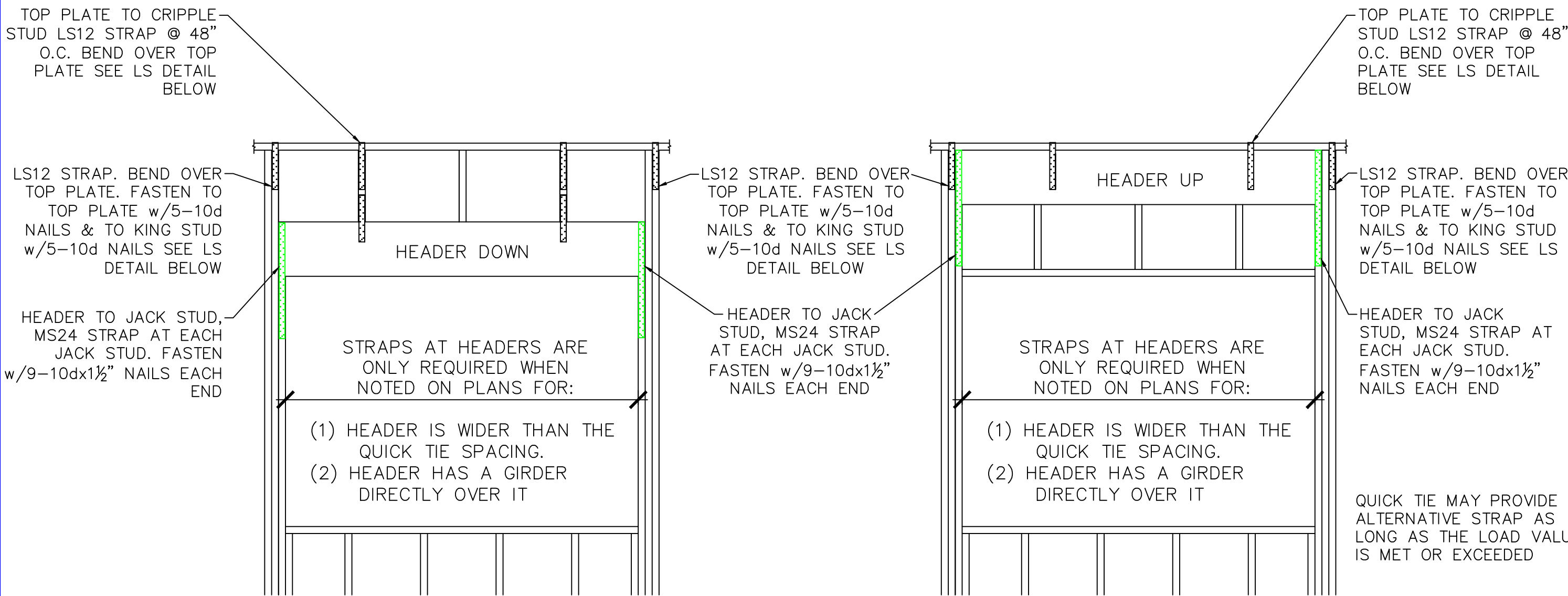


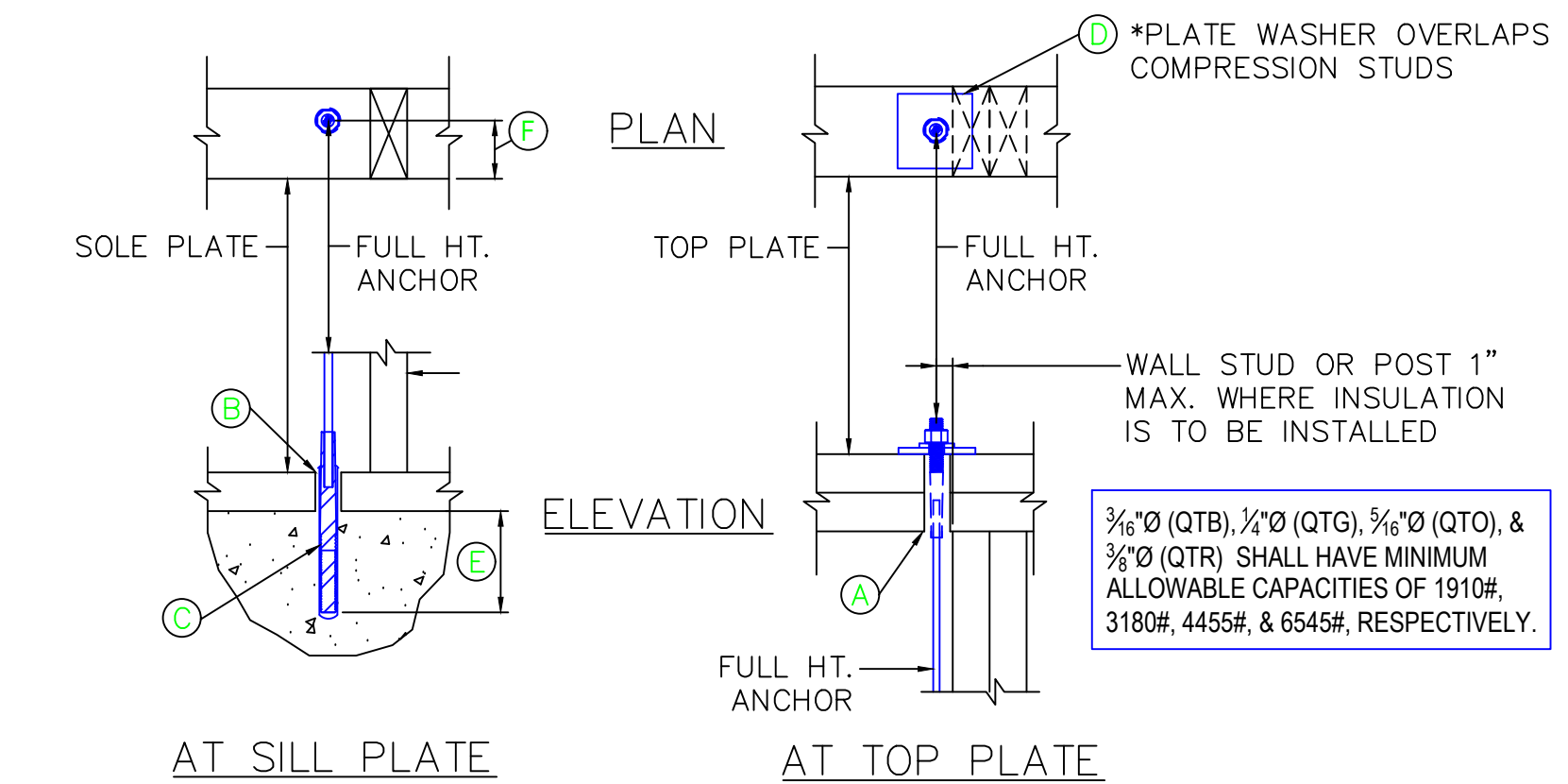
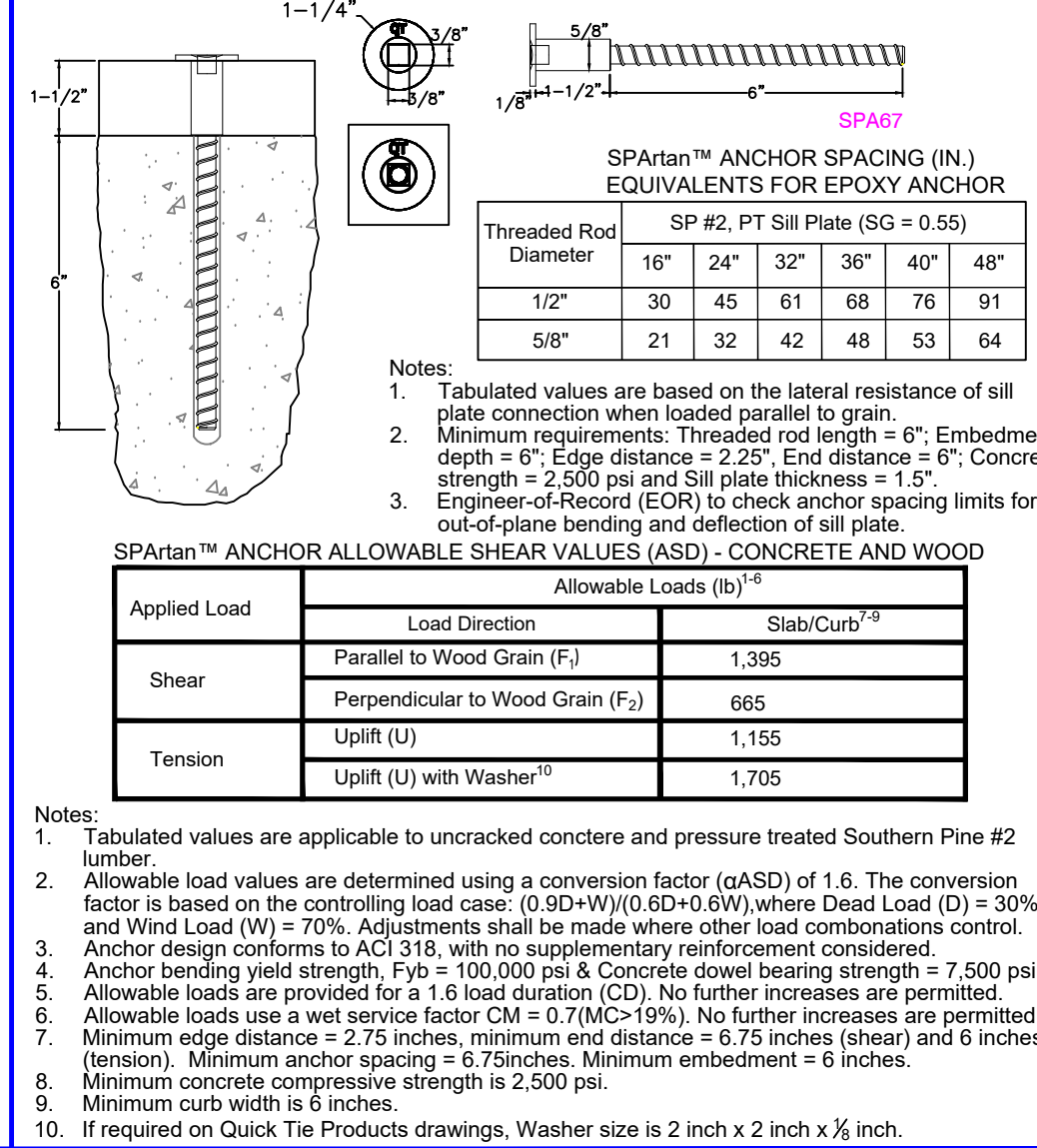


QUICK TIE INSTALLATION DETAILS

1 WHEN REQUIRED HEADER STRAPPING DETAIL (USE WHEN NOTED)



2 QUICK TIE SPARTAN™ ANCHOR

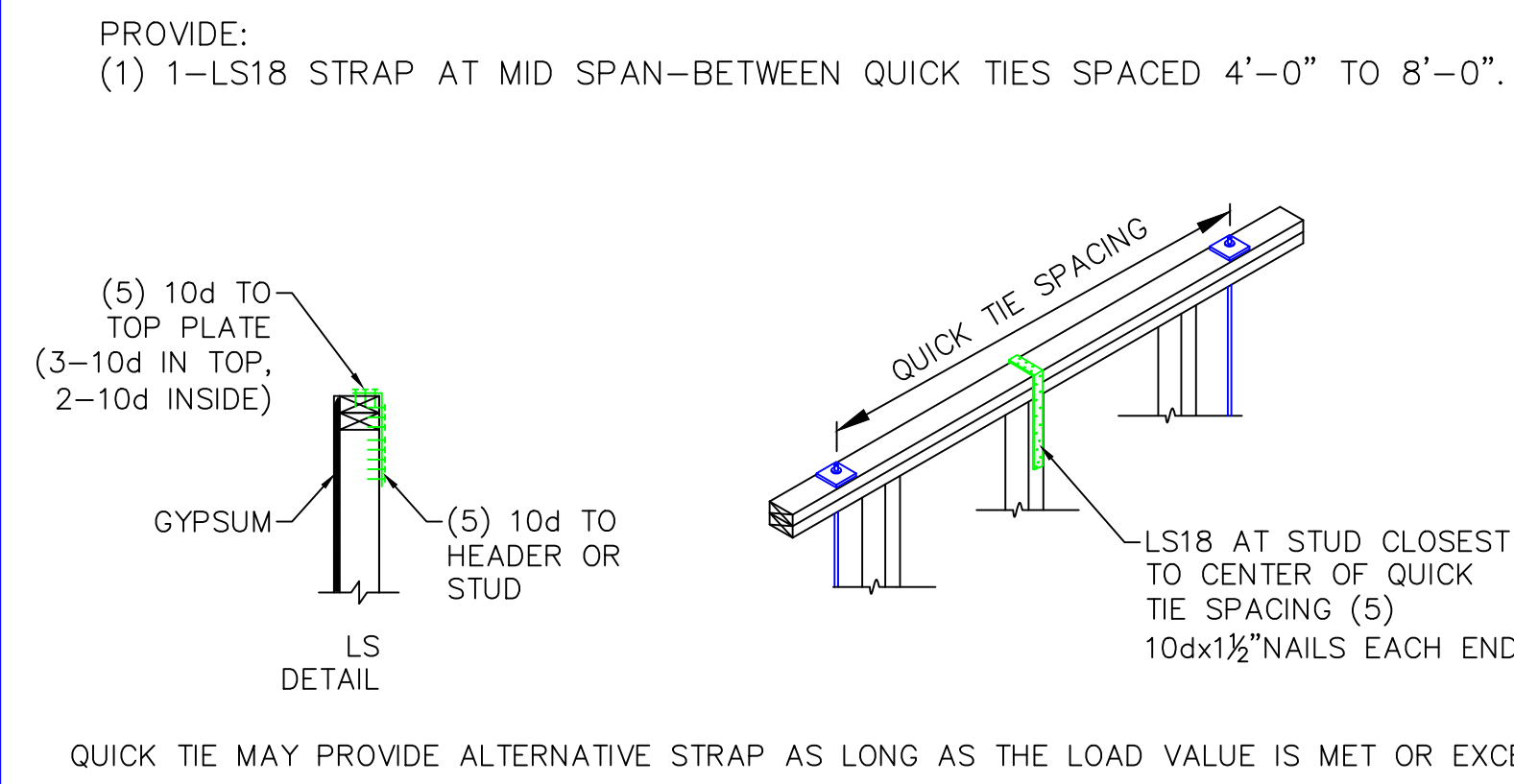


FULL HEIGHT ANCHOR INSTALLATION CHART

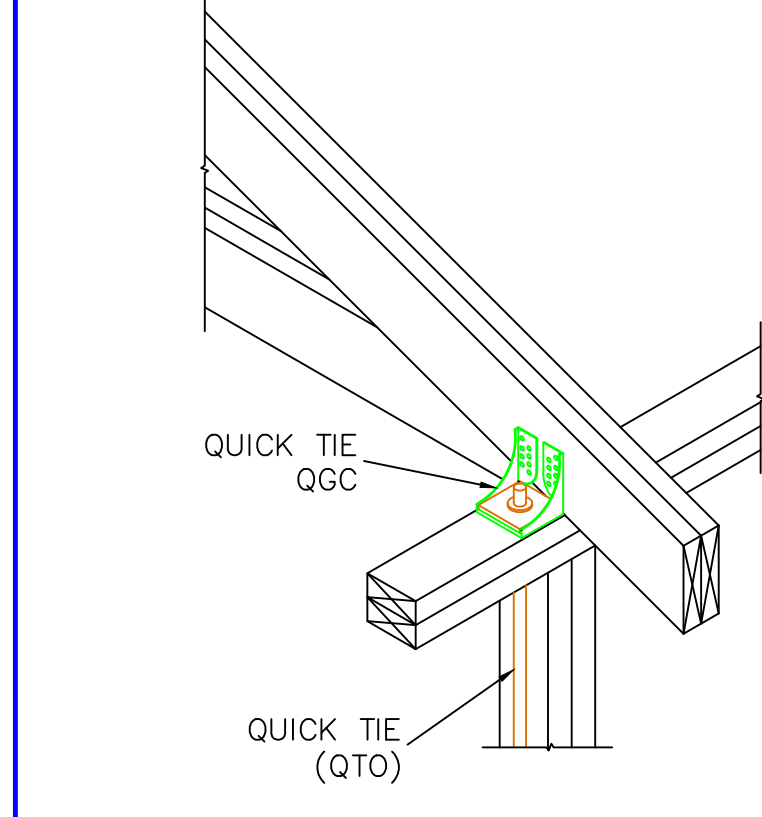
FULL HT. ANCHOR	FULL HEIGHT ANCHOR INSTALLATION CHART					
	(A) TOP PLATE HOLE	(B) SILL PLATE HOLE	(C) CONCRETE HOLE	(D) WASHER SPEC.	(E) MIN EMBEDMENT DEPTH	(F) MIN EDGE DISTANCE
QTB	1" Ø	7/8" Ø	7/8" Ø	2 1/4" x 2 1/4" x 3/16"	4"	4"
QTG	1" Ø	5/8" Ø	5/8" Ø	3" x 3" x 1/4"	4"	4"
QTO	1" Ø	3/4" Ø	3/4" Ø	3" x 3" x 1/4"	6 3/8"	6 3/8"
QTR	1" Ø	7/8" Ø	7/8" Ø	3" x 4 1/2" x 1/2"	8 1/8"	8 1/8"

MONO

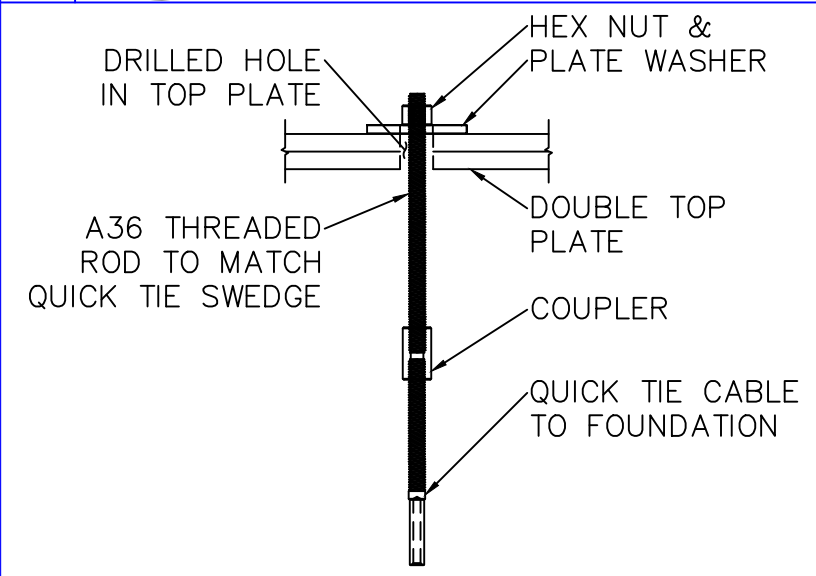
3 WHEN REQUIRED LS18 STRAPPING AT GWB (USE WHEN NOTED)



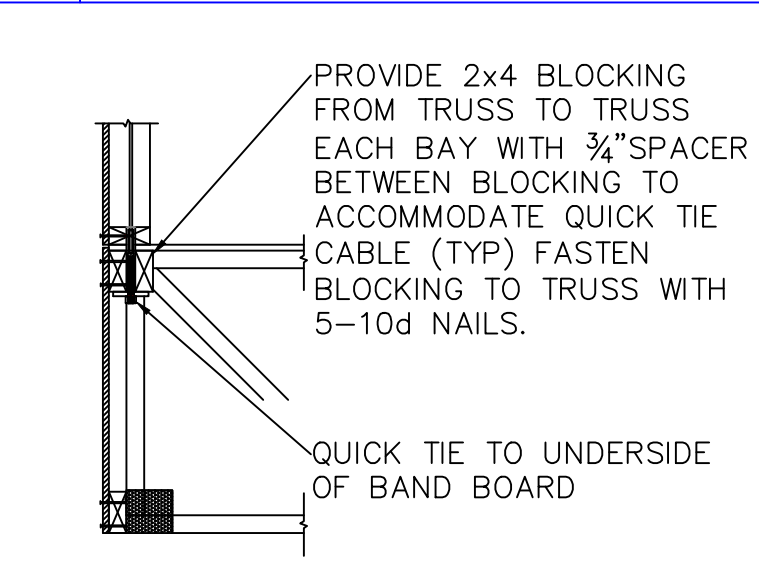
4 QGC (USE WHEN NOTED)



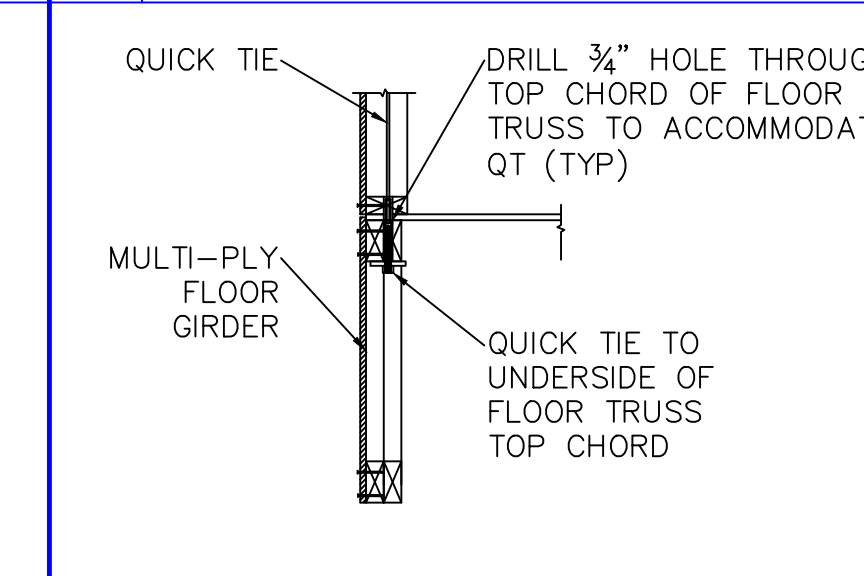
5 WHEN REQUIRED EXTENSION CONNECTION



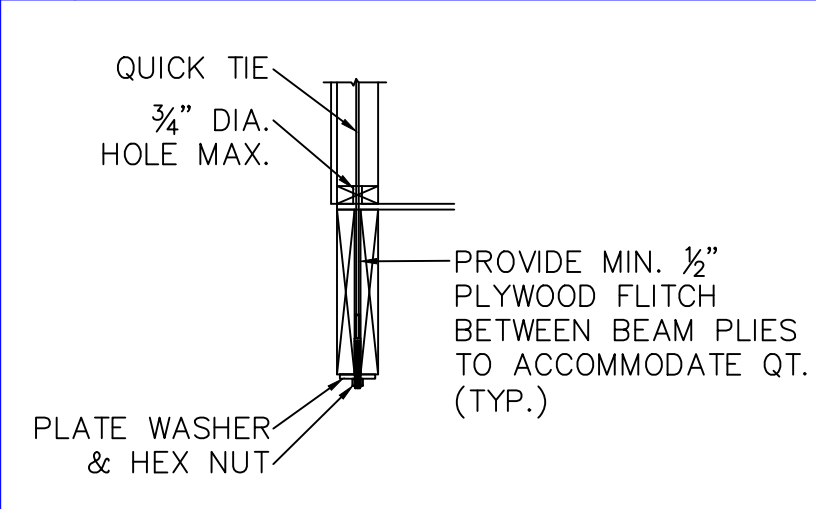
6 RIM BOARD CONNECTION



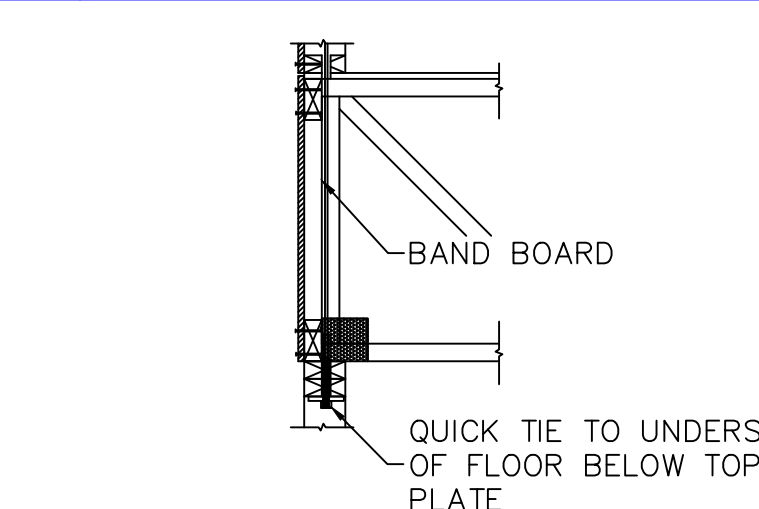
7 FLOOR TRUSS CONNECTION



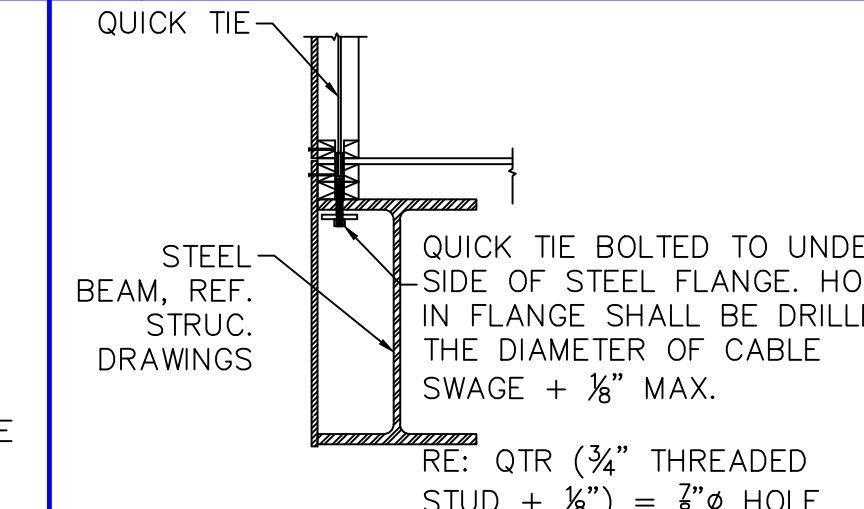
8 WOOD BEAM CONNECTION



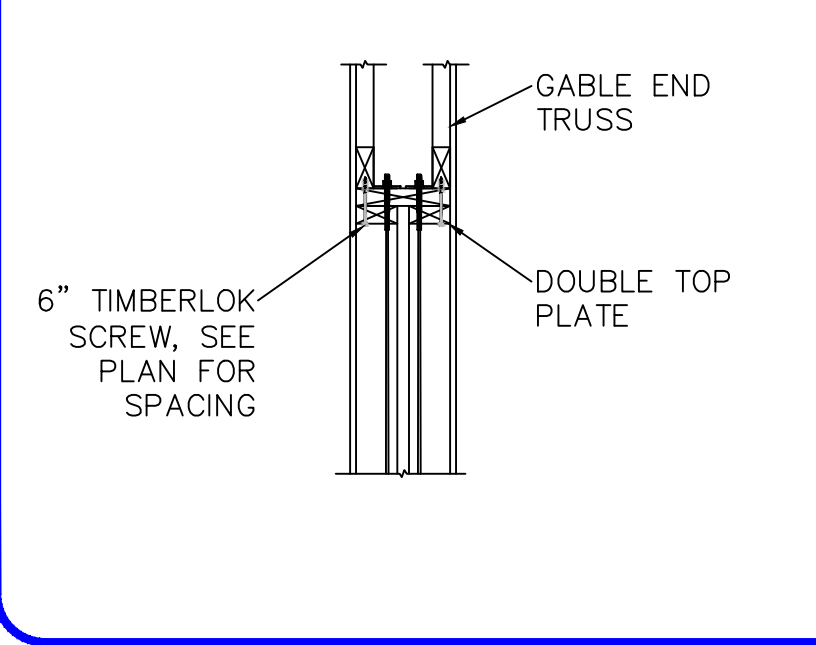
9 QT UNDER TOP PLATE



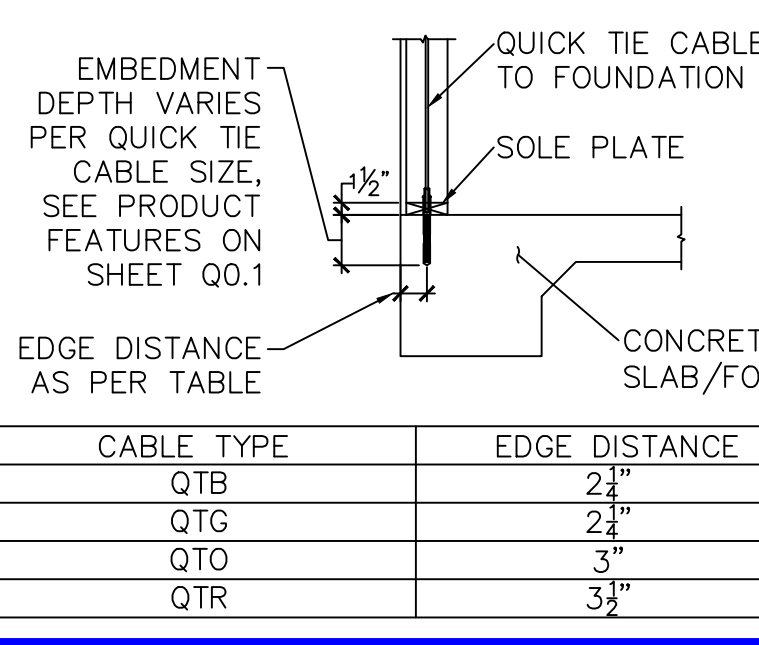
10 STEEL BEAM CONNECTION



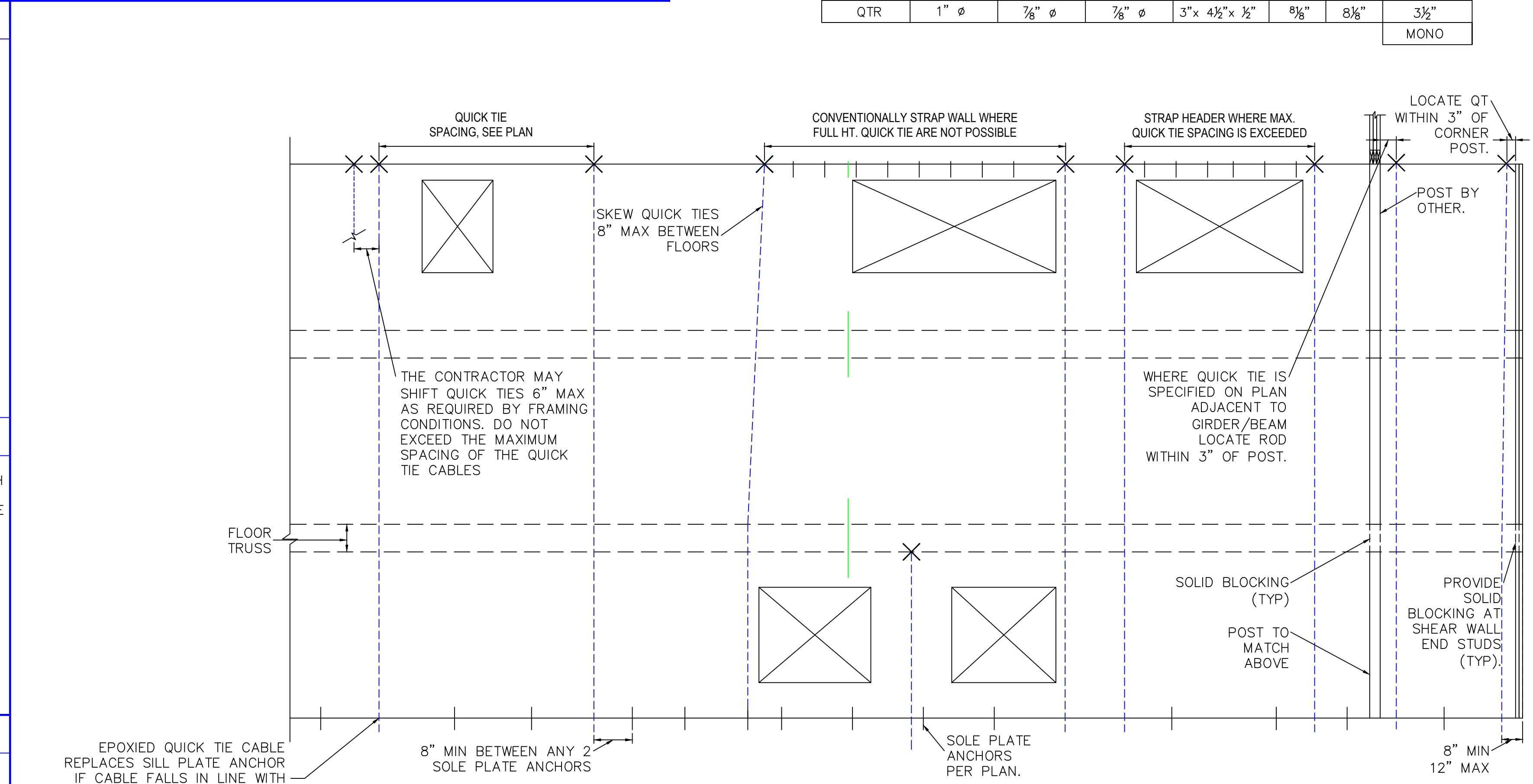
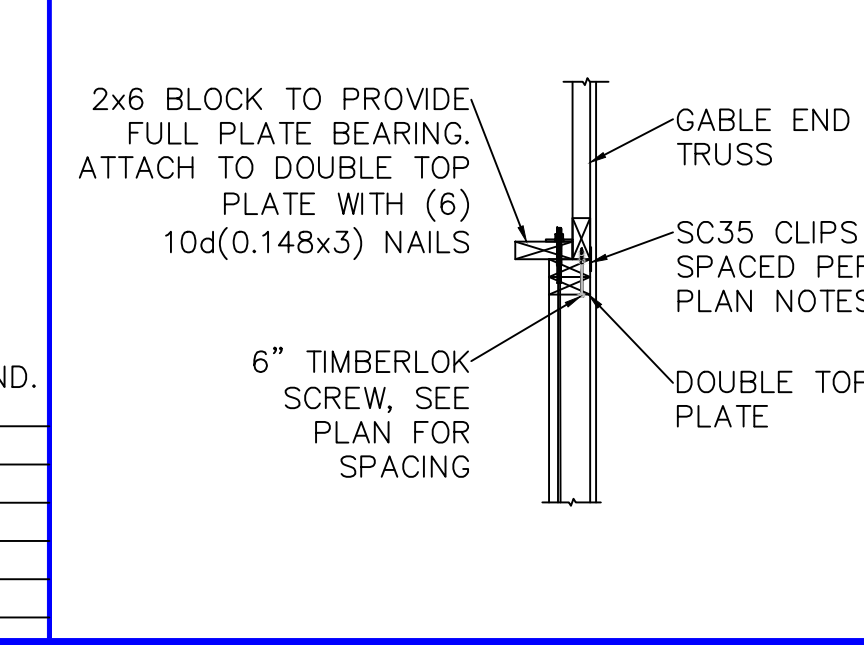
11 PARTY WALL CONNECTION



12 FOUNDATION CONNECTION



13 GABLE END CONNECTION



QUICK TIE ANCHORING SYSTEM INSTALLATION SCHEMATIC

SCALE: 1/8" = 1'-0"

HEADER NOTES:  
1. STRAPS AT HEADERS ARE ONLY REQUIRED WHEN  
A. WHEN HEADER IS WIDER THAN THE QUICK TIE SPACING.  
B. WHEN HEADER HAS A GIRDER TRUSS DIRECTLY ABOVE.  
2. PROVIDE 2-CS16 STRAPS ON KING AND JACK STUDS THROUGH FLOOR SYSTEM BELOW IF THERE IS NOT A QUICK TIE ADJACENT TO OPENING.



DATES: REVISIONS:

DATE	REVISION
01/19/2023	EOR REVIEW

CONTRACTOR

ARCHITECT

STRUCTURAL

PROJECT

DESIGN CRITERIA

BUILDING CODE: SOUTH CAROLINA BUILDING CODE, 2018 EDITION

WIND SPEED: 111 MPH

CATEGORY: II

EXPOSURE CATEGORY: C

ENCLOSURE: MWFRS

TYPICAL FRAMING TIE DOWN DETAILS

QD1

2 OF 2 SHEETS

DATE: 01/19/2023

SCALE: AS SHOWN

DRAWN BY: TIG