

PAS SERIES

PRODUCT FEATURES:

QuickTie™ Purlin Anchor Straps (PAS) are used for joist to concrete or CMU wall attachment and foundation applications.

MATERIAL:

PAS Series - 12 Gauge

COATING:

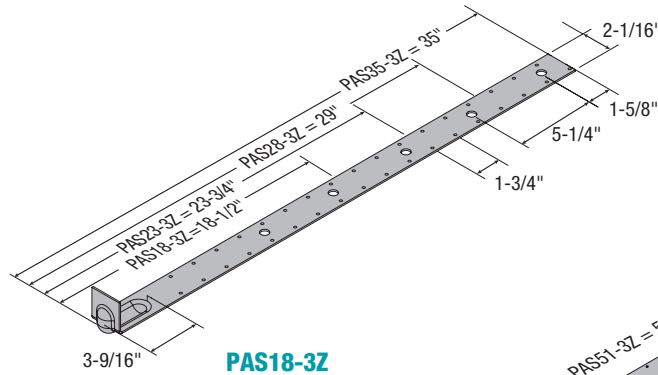
Galvanized (G185)

INSTALLATION:

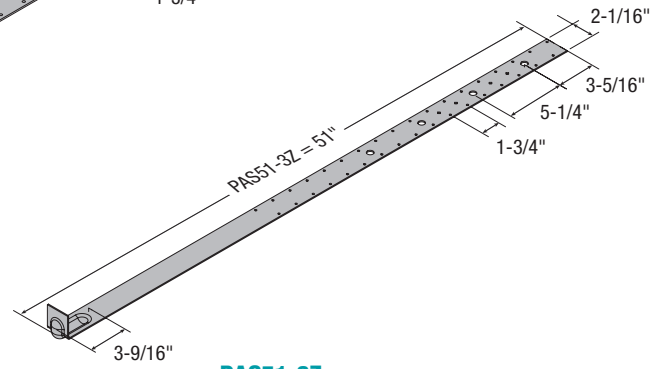
- Use all specified fasteners in schedule to achieve the values indicated.
- PAS Series requires a minimum of 4" and 6" embedment into the concrete and CMU walls, respectively.
- Minimum concrete compressive strength is 2,500 psi.

CODE COMPLIANCE:

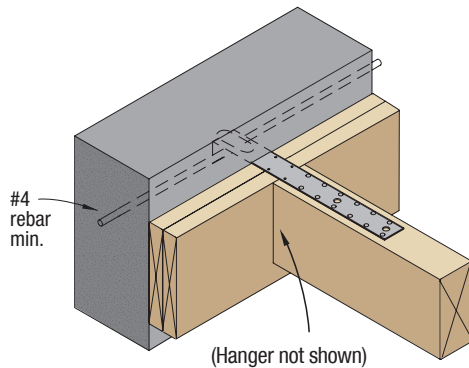
TER 0910-01; FL 3557



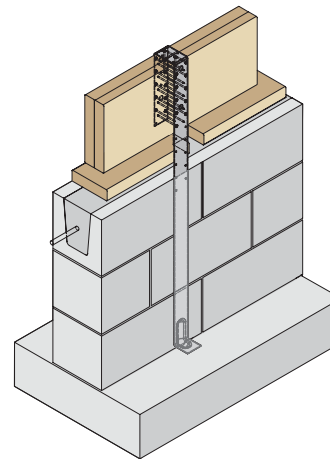
PAS18-3Z
PAS23-3Z
PAS28-3Z
PAS35-3Z



PAS51-3Z



Purlin-to-Wall Attachment



Rim Joist-to-CMU Stem Wall Attachment

ALLOWABLE TENSION LOADS FOR PURLIN ANCHORS (LB)¹

Part		Embedment Length, L _e (in.)		Stud Fasteners		Allowable Loads (lb) ^{1,4}			
						SP / DF-L (SG = 0.50)		HF / SPF	
						Floor	Uplift	Floor	Roof
No.	Length, L (in.)	Concrete ²	CMU ³	Type	Qty	1.0	1.6	1.0	1.6
PAS18-3Z	18-1/2	4	6	10d (0.148 x 3")	12	1,685	2,700	1,465	2,340
PAS23-3Z	23-3/4				16	2,250	3,600	1,950	3,120
PAS28-3Z	29				16	2,250	3,600	1,950	3,120
PAS35-3Z	35				16	2,250	3,600	1,950	3,120
PAS51-3Z	51				10	1,405	2,250	1,220	1,950

NOTES:

1. Minimum wood member size is 3" x 3 1/2".
2. Minimum compressive strength of concrete is 3,000 psi.
3. Minimum compressive strength of grout-filled CMU is 2,000 psi.
4. Total deflection of connector assembly at highest allowable load is 0.031".

Purlin Anchor Straps

EMBEDDED TRUSS ANCHOR STRAPS (METAS/HETAS)

PRODUCT FEATURES:

QuickTie™ Embedded Truss Anchor Straps (METAS/HETAS) are used for roof truss to concrete or CMU wall attachments.

MATERIAL:

METAS Series - 18 Gauge
HETAS Series - 16 Gauge

COATING:

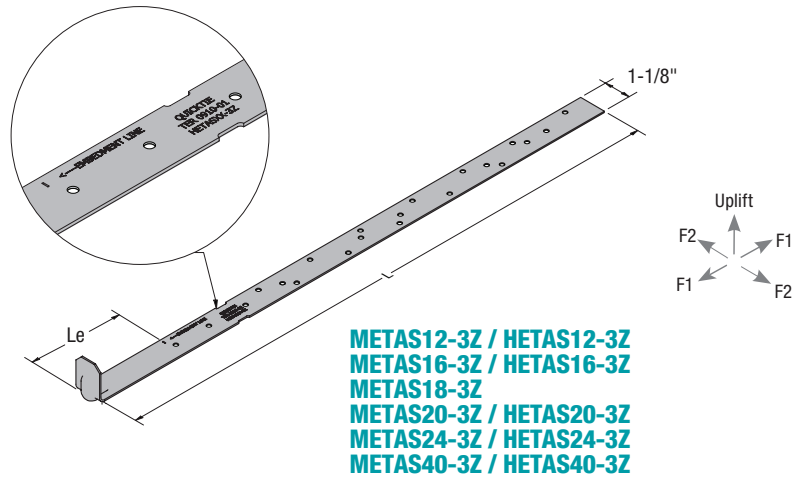
Galvanized (G185)

INSTALLATION:

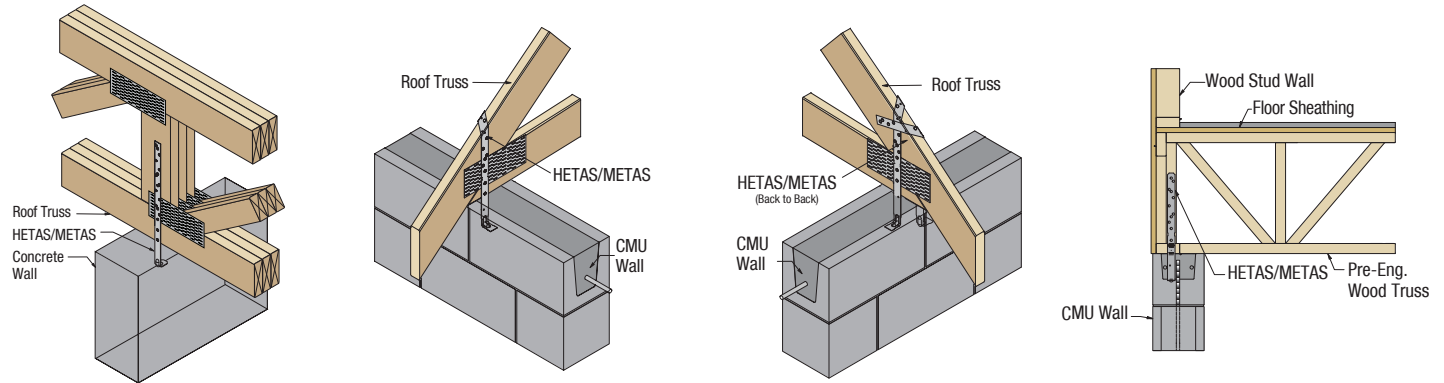
- Use all specified fasteners in schedule to achieve the values indicated.
- METAS/HETAS Series requires a minimum of 4" embedment into the concrete and CMU walls.

CODE COMPLIANCE:

TER 0910-01; FL 3557



METAS12-3Z / HETAS12-3Z
METAS16-3Z / HETAS16-3Z
METAS18-3Z
METAS20-3Z / HETAS20-3Z
METAS24-3Z / HETAS24-3Z
METAS40-3Z / HETAS40-3Z



ALLOWABLE LOADS FOR EMBEDDED TRUSS ANCHOR STRAPS (LB)^{1,2,3,4,5}

Part No.	Length, L (in.)	Embed Length, L _e (in.)		Fasteners		Allowable Loads (LB) - Southern Pine (SG = 0.55, C _D = 1.6)															
						Single Anchor						Double Anchor									
		Concrete	CMU	Qty	Nail Type	CMU			Concrete			CMU			Concrete						
						Uplift	F1	F2	Uplift	F1	F2	Uplift	F1	F2	Uplift	F1	F2				
METAS12-3Z	12	4	4	7	10dx1-1/2 (0.148 x 1.5")	1,445	340	760	1,445	340	760	2,890	1,335	1,140	2,890	1,335	1,140				
METAS16-3Z	16	4	4	9		1,600	440	760	1,600	440	760	3,195	1,375	1,140	3,195	1,375	1,140				
METAS18-3Z	18					4	4	9	10dx1-1/2 (0.148 x 1.5")	1,475	340	760	1,475	340	760	2,950	1,335	1,140	2,950	1,335	1,375
METAS20-3Z	20									1,895	440	760	1,895	440	760	3,325	1,375	1,140	3,175	1,405	1,375
METAS24-3Z	24									1,895	440	760	1,895	440	760	3,325	1,375	1,140	3,175	1,405	1,375
METAS40-3Z	40	4	4	9	1,895	440	760	1,895	440	760	3,325	1,375	1,140	3,175	1,405	1,375					

NOTES:

1. Allowable loads are provided for load duration factor (C_D) of 1.6. No further increase is permitted.
2. Minimum specified compressive strength of grout is 2,000 psi and minimum edge distance for CMU installation is 2 in.
3. Minimum specified compressive strength of concrete is 2,500 psi and minimum edge distance for concrete installation is 1.5".
4. Loading in F1 direction indicates shear forces parallel to the plane of the concrete/CMU wall.
5. Loading in F2 direction indicates shear forces perpendicular to the plane of the concrete/CMU wall.